

249 000 €

Apartment for sale

4 rooms

Surface : 72 m²

Surface of the living space : 26 m²

Année construction : 1960

Exposition : Est ouest

Vue : Dégagée

Eau chaude : Collective

Indoor condition : to renovate

Standing : bourgeois

État immeuble : good

Prestations :

double glazing, gated, calm, armored door,
residential, visitor parking

2 bedrooms

1 terrace

1 shower

1 WC

1 garage

1 parking

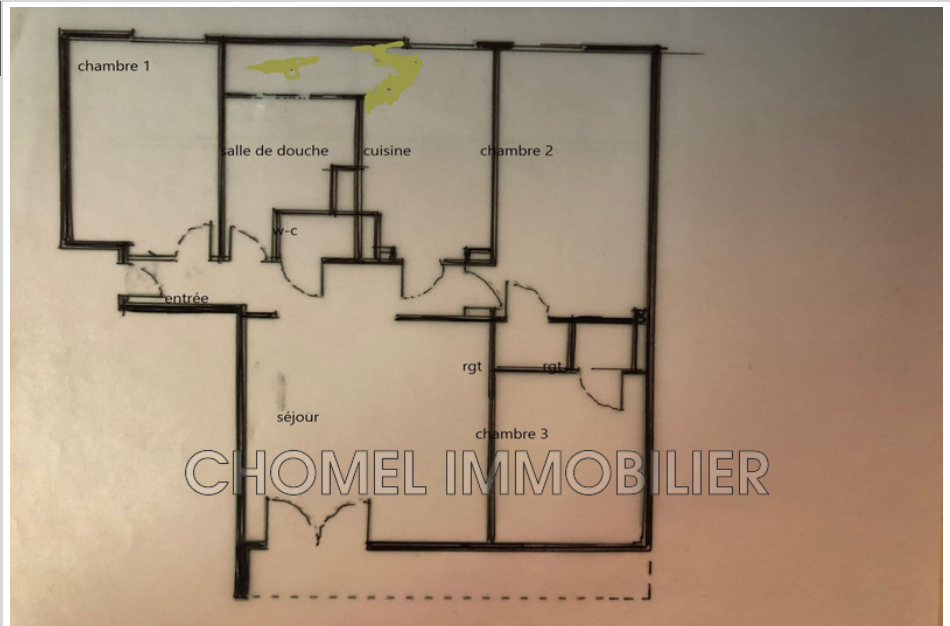
1 cellar

Classe énergie (dpe ancienne version) : D

Emission de gaz à effet de serre (ges
ancienne version) : D

Document non contractuel

29/04/2024 - Prix T.T.C



Apartment réf. 603V186A Lyon

EXCLUSIVE; T3/4, superb location 5 minutes from Croix-Rousse; Hospital and Theater; 8 minutes from Cuire metro (Line C).

Caluire et Cuire borders Lyon 4 and its prices are much more accessible, while still being able to benefit from all the shops, its market, and the attractiveness of Croix-Rousse.

Located on the 2nd floor (no elevator) of a small, closed, secure condominium from 1960; with free space within the co-ownership.

This apartment, completely to be renovated, is east-west crossing. To the east is its double living room (possibility of creating a third bedroom) which opens onto its large unobstructed balcony. To the West are the 2 bedrooms and the kitchen; with Cypress trees to attenuate any noise which ensures absolute calm.

This apartment has all its bay windows in PVC double glazing; and its radiators are equipped with individual meters, which allows you to have reasonable and modifiable consumption; which among other things made it possible to obtain the letter D in his DPE.



Bien en copropriété

80 lots in the condominium 249 000 € honoraires d'agence inclus

Tél: 06 89 02 27 76 / 04 78 22 10 51- marjolaine@chomel.immo

Document non contractuel